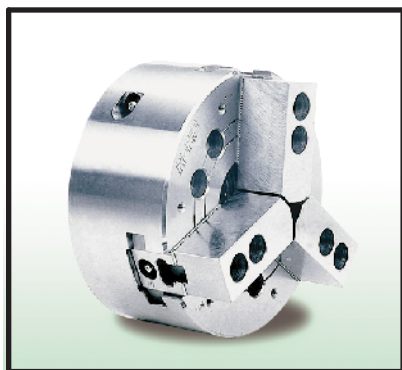


超長爪行程動力夾頭

3L / 3LA

EXTRA LONG JAW STROKE POWER CHUCK

專利產品字號：台灣：PAT.207282號 (Taiwan)
大陸：PAT.ZL02284637.9號 (China)

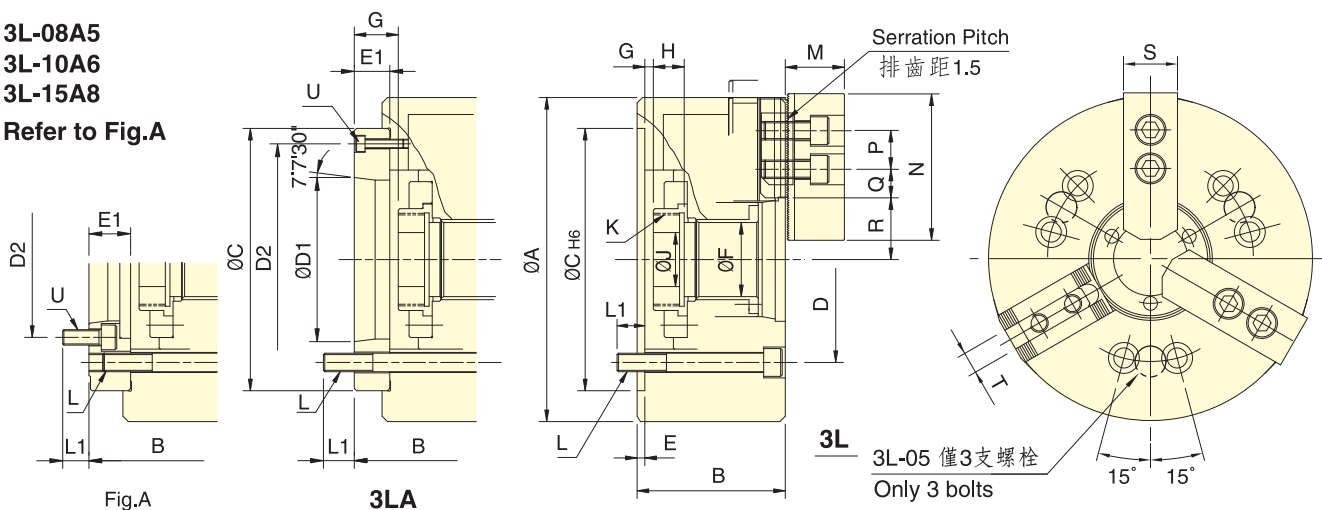


- 曲柄型三爪超大貫通孔徑，超長爪行程。
- 摺動面均經硬化及精密研磨，並直接潤滑。
- 高剛性結構及高夾持精度。
- 安裝連結方式與中空夾頭一樣，且可與之相容互換，不必更改拉桿。
- It's a CRANK type 3-jaw with the large through-hole, and extra long jaw stroke.
- Matching surfaces of all parts hardened, ground and lubricated directly.
- Construction of high rigidity and high clamping accuracy.
- The installation is the same as "Through-hole power chuck" and they are replaceable with each other. No need to change the "Draw tube".
- J值為連結螺帽未車製螺牙時的孔徑。Kmax值為連結螺帽可車製螺牙之最大規格，但可依實際需求訂製。
- J value is the hole diameter of blank draw nut, K is the maximum thread specification, and it could be customize.

POWER CHUCK

3L-08A5
3L-10A6
3L-15A8

Refer to Fig.A



保留規格修改的權利
Subject to technical changes.

註：紅色數據為3L-A型之寸法。
The dimensions and the specifications of 3L-A type are in the red data.

規格 型號	Spec. Model	夾持行程mm Plunger stroke	爪行程(直徑)mm Jaw stroke(Dia.)	夾持直徑 Chuckng Dia.mm 最大 Max. 最小 Min.	容許油壓缸推力kN(kgf) Max. D.B. pull	最大夾持力kN(kgf) Max. clamping force	最高迴轉數min ⁻¹ (r.p.m) Max. speed	I kg·m ²	重量 kg Weight	通用迴轉缸 Matching cyl.	最大使用壓力 Max. pressure Mpa (kgf/cm ²)		
3L-05	A4	12	18	135	6	15.6(1590)	17.2(1750)	4200	0.019	7.2	8.0	TH-536	2.4(24)
3L-06	A5	15	24	168	10	23.5(2400)	26 (2650)	3600	0.063	13	14.8	TH-646	2.7(27)
3L-08	A5	20	32	210		34.3(3500)	40.7(4150)	3000	0.175	23	25.9	TH-852	2.6(26)
	A6										24.1		
3L-10	A6	25	37.5	254	18	47.7(4870)	55.9(5700)	2400	0.347	38	45	TH-1075	2.7(27)
	A8										43.5		
3L-12	A8	30	45	304	30	64.7(6600)	75 (7650)	2100	0.827	62	67.5	TH-1291	2.8(28)
3L-15	A8	35	52	385	50	84.3(8600)	90.9(9280)	1600	2.58	136	150	TH-1512	2.6(26)
	A11										143		

寸法 Size 型號 Model	A	B	C	D	D1	D2	E	E1	F	G max.	G min.	H	J			
3L-05 A4	135	65	76	110	82.6	63.51	96	4	15	32	1	16	-11	4	20	12
3L-06 A5	168	84	97	140	104.8	82.56	116	5	18	42	6.5	24.5	-8.5	9.5	19	20
3L-08 A5	210	96	114	170	133.4	106.38	104.8		23	48	7	30	-13	10	20	30
	A6						150	5	25	70	8	33	-17	8	25	45
3L-10 A6	254	110	130	220	171.4	133.4	133.4		18			33		1		
	A8								190	6	18	91	15	33	-15	3
3L-12 A8	304	127	140			139.72	171.4	33	120		12.5	45.5	-22.5	10.5	39	60
3L-15 A8	385	150	177	300	235	196.87	260	22			34.5		-0.5			
	A11		166													

寸法 Size 型號 Model	K max.	L	L1	M	N	P	Q max.	Q min.	R max.	R min.	S	T	U	
3L-05 A4	M40x1.5	3~M10	15	15	31	62	14	23	13.75	31	22	25	10	3~M6
3L-06 A5	M55x2	6~M10	18		37	73	20	25.75		39	27	31	12	
3L-08 A5	M60x2	6~M12		22	19	38	95	25	28.25	16.25	49.25	33.25	35	14
	A6		22		20	43	110	30	35.25	17.25	64.25	45.25	40	16
3L-10 A6	M85x2	6~M16		25	51	130	46.25		19.25	77	54.5	50	21	6~M12
	A8			20	19	51	130	46.25	19.25	77	54.5	50	21	3~M8
3L-12 A8	M100x2		33	31	63	165	43	51.25	27.25	94.25	68.25	62	25.5	6~M16
3L-15 A8	M130x2	6~M20												31
	A11													