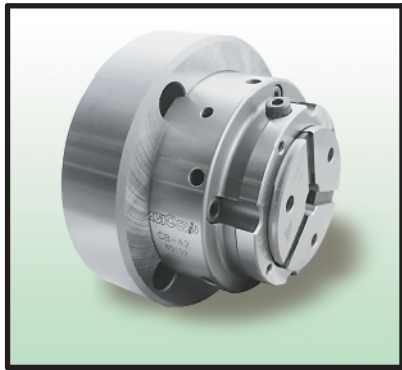


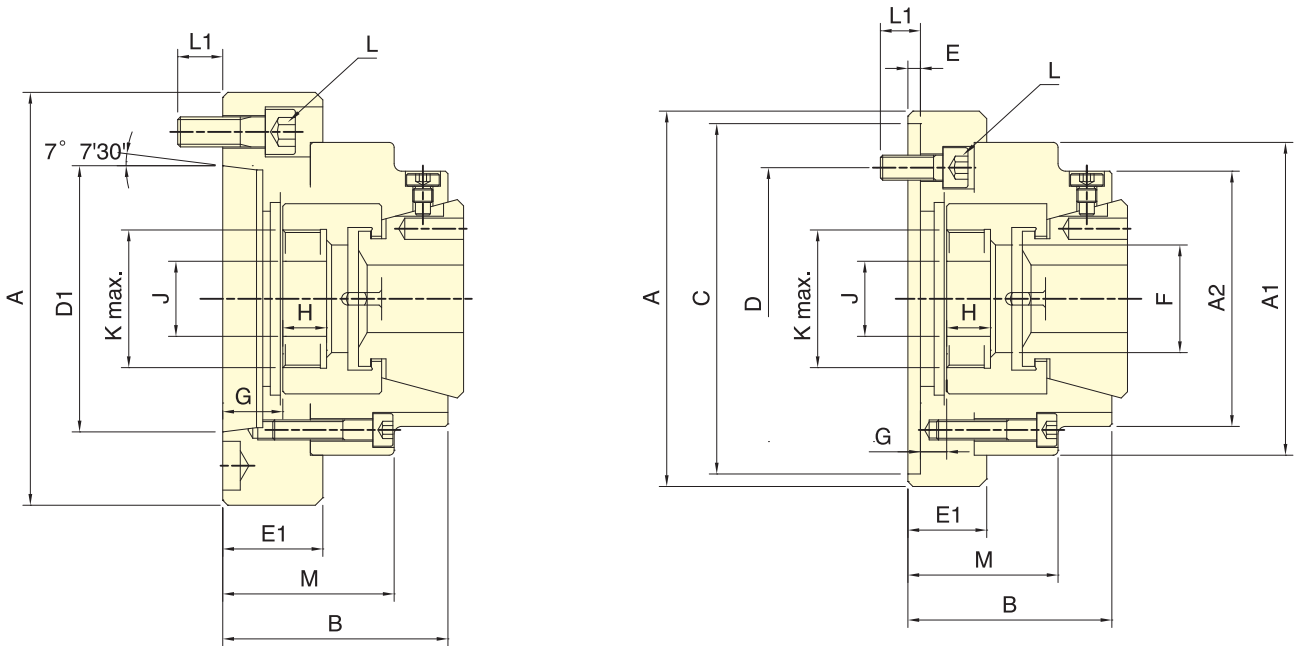
後拉式筒夾夾頭



DRAW COLLET CHUCK



- 後拉式筒夾夾頭，適合CNC車床，專用機，或其它旋削機械，作棒材或心軸加工用。
- 高精度，高轉數及高剛性結構。
- 安裝連結方式與中空夾頭一樣，且可與之相容互換，不必更改拉桿。
- 全面防水設計，防止切削水進入主軸通孔處。
- It's a DRAW type collet are used mainly on turning, CNC, special purpose machines and other, etc.
- High clamping accuracy, high speed and construction of high rigidity.
- The installation is the same as "thru-hole power chuck" and they are replaceable with each other, no need to change the "Draw tube".
- This is a completely sealed design, which prevents coolant and chips from entering the spindle.
- J值為連結螺帽未車製螺牙時的孔徑。Kmax值為連結螺帽可車製螺牙之最大規格，但可依實際需求訂製。
- J value is the hole diameter of blank draw nut, K is the maximum thread specification, and it could be customize.



CB-A

CB

保留規格修改的權利
Subject to technical changes.

規格 Spec. 型號 Model	套筒行程 mm Plunger stroke	最大夾持能力 Max. Chucking Capacity mm			容許油壓缸推力 kN(kgf) Max. D.B. pull	最大夾持力 kN(kgf) Max. clamping force	最高迴轉數 min ⁻¹ Max. speed (r.p.m)	I kg·m ²	重量 kg Weight	使用筒夾 Matching Steel Collet	通用油壓缸 Matching cyl.	最大使用壓力 Max. pressure Mpa (kgf/cm ²)
		圓棒 Round	方材 Square	六角材 Hexagon								
CB-42	4.5	4~42	7~30	7~32	34.3(3500)	78.4(8000)	7000	0.025	6.5	GT42	TK846	2.8(28)
CB-42A5								0.058	6.2			
CB-42A6								0.061	7.4			
CB-65								0.098	15.0			
CB-65A6	5~65	8~46	10~50	44.1(4500)	103(10500)	5500	5500	0.091	13.6	GT65	TK1068	3.0(30)
CB-65A8								0.106	17.6			

寸法 Size 型號 Model	A	A1	A2	B	C (H6)	D	D1	E	E1	F	G max.	G min.	H	J	K max.	L	L1	M
CB-42	150			81.5	140		82.56	5	31		10.5	6				3~M10x30		60
CB-42A5	140	125	102	91.5	-	104.8	106.38	-	41	43	25.5	21	17.5	20	M55x2	4~M10x30	16	70
CB-42A6	165					133.4										4~M12x35	18	
CB-65	185			95	170			6	45		8.5	4				6~M12x40		68
CB-65A6	180	145	120	98	-	133.4	106.38	-	48	67	17.5	13	22	45	M75x2	4~M12x40	24	71
CB-65A8	180			107	-	171.4	139.72	-	57		26.5	22				4~M16x45		80