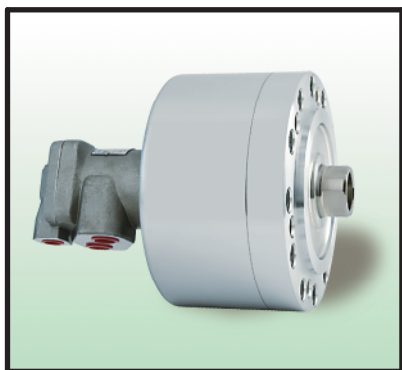
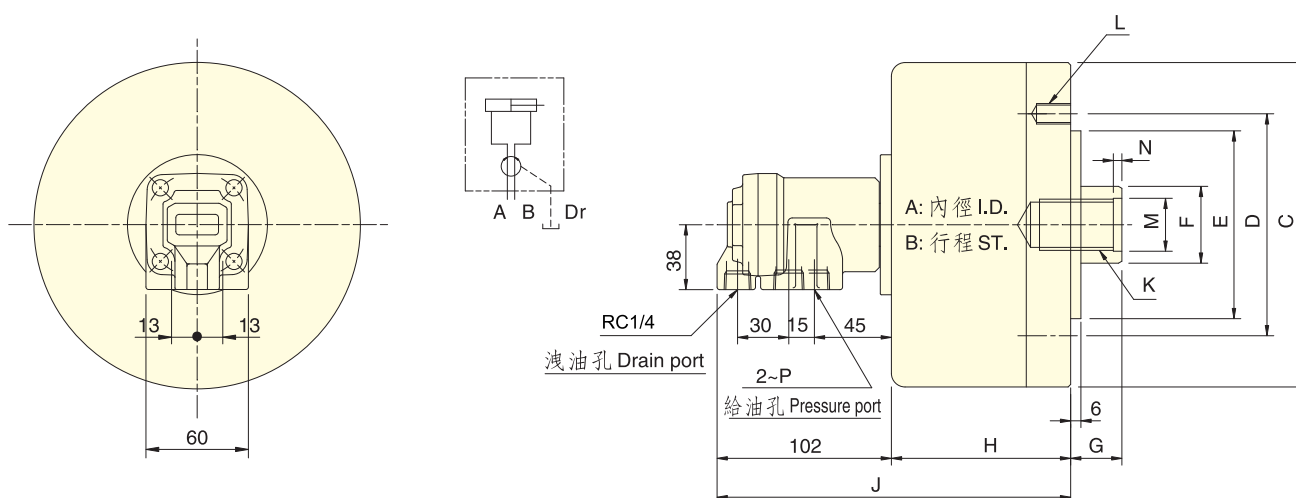


中實迴轉油壓缸

ROTATING HYDRAULIC CYLINDER



- 迴轉閥體與缸體皆採用特殊輕合金製造而成，重量輕。
- 迴轉閥經特殊設計，使得內部的軸承能充分的潤滑及冷卻，而能耐高速迴轉，增長壽命。
- The rotary valve and cylinder body, all made of special light alloy, light-weight.
- Through unique design, the rotary valve enables the inside bearing to get sufficient lubricating and cooling and endure high-speed rotary for longer service life.
- 洩油孔配管務必單獨接回油壓槽，以避免產生背壓。
- The drain port should be independently connected to oil tank to avoid back pressure.



保留規格修改的權利
Subject to technical changes.

規格 Spec. 型號 Model	活塞面積 Eff. piston area cm ²		行程 mm Piston stroke	最高迴轉數 min ⁻¹ (r.p.m) Max. speed	最高使用壓力 MPa Max. pressure (kgf/cm ²)	I kg·m ² Moment of inertia	重量 kg Weight
	伸側 Extend	拉側 Retract					
RH-65	31.0	27.9	15	6000	3.5(35)	0.01	2.9
RH-80	47.7	42.8					
RH-100	75.4	70.5	20	5500	4.0(40)	0.04	4.9
RH-100K		68.4					
RH-125	119.6	112.5	25	4000	3.5(35)	0.08	6.8
RH-125K		110.0					
RH-150	173.6	157.7	30	4000	4.0(40)	0.18	11.5
RH-200	310.0	286.3	35				

寸法 Size 型號 Model	A	B	C	D	E h7	F	G		H	J	K	L	M H8	N	P
							max.	min.							
RH-65	65	15	98	80	60	22	45	30	74	175	M12x1.75x30	6~M8x16	-	4	RC3/8
RH-80	80		112	90	65	25					30				
RH-100	100	20	135	100	80	30	25	89	190	M20x2.5x35	6~M10x20	-	4	RC3/8	
RH-100K						30									89
RH-125	125	25	160	130	110	35	50	96	197	M24x3.0x44	6~M12x20	-	4	RC3/8	
RH-125K						35									96
RH-150	150	30	190	145	120	45	70	35	105	206	M30x3.5x45	12~M12x24	31	5	RC1/2
RH-200	200	35	245			45			55	105	206	M30x3.5x45	12~M16x30		