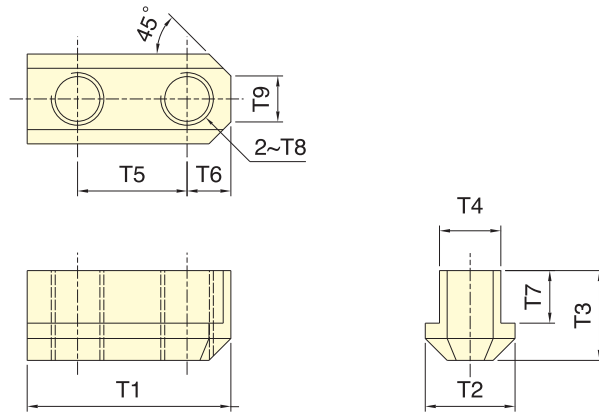
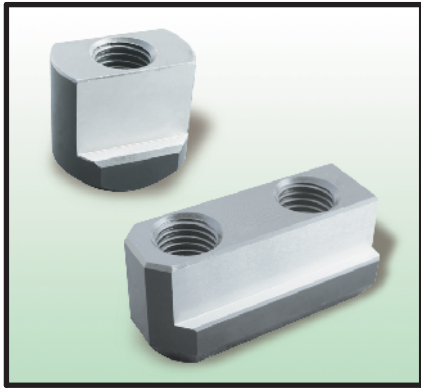
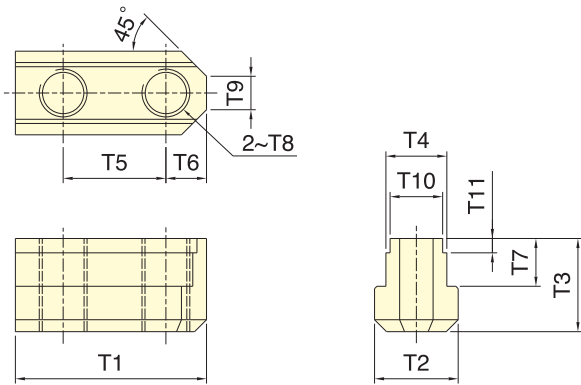


# T形螺帽

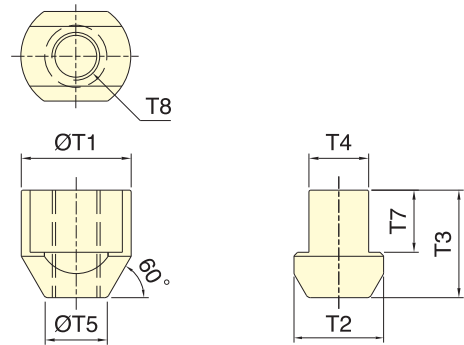
## T-Nut



TN 1



TN 2



TN 3

保留規格修改的權利  
Subject to technical changes.

尺寸 Dim 型式 Model	T1	T2	T3	T4	T5	T6	T7	T8	T9	T10	T11	適合夾頭 Matching Chuck	三爪重量 (kg) 3 Jaw Weight
TN1-04	26	15	15	10	14	6	9.5	M8	5			3H-04, 2H-04, 3H-05, 2H-05, 3L-05, 2L-05, 3P-04, 2P-04, 3P-05, 2P-05, 3M-05, 2M-05	0.06
TN1-06	36	17.5	18.5	12	20	8	11	M10	6			3H-06, 2H-06, 4H-06, 3H-06B, 3L-06, 2L-06, 3P-06, 2P-06, 3M-06, 2M-06	0.15
TN1-08	46.5	20	20.5	14	25	10.5	12	M12	9	-	-	3H-08, 2H-08, 4H-08, 3H-08B, 3L-08, 2L-08, 3P-08, 2P-08, 3M-08, 2M-08, 4T-08	0.27
TN1-10	51	22.5	21.5	16		11	13		11			3H-10, 2H-10, 4H-10, 3H-10B, 3L-10, 2L-10, 3P-10, 2P-10, 3M-10, 2M-10, 4T-10, 4T-12	0.36
TN1-12					30			M16				3H-12, 2H-12, 4H-12, 3H-12B, 3L-12, 2L-12, 3P-12, 2P-12, 3M-12, 2M-12, 3V-12, 4T-15	0.63
TN2-12	55.5	29.5	28	21		12	16.5	M14	13	18	4.5	3P-12, 2P-12	0.63
TN1-15										22	6	3H-15, 2H-15, 3H-18, 4H-18	1.53
TN2-15	80	35	39	25.5	43	17	20	M20	14	-	-	3H-15, 2H-15, 4H-15, 3H-15B, 3H-18, 4H-18, 3H-18B, 3L-15, 2L-15, 3P-15, 2P-15, 3P-18, 3V-15, 3V-18	1.50
TN3-21	46	37.5	45	25	26.5	-	26		-	-	-	3H-21B, 3H-24B, 3P-21, 3P-24, 3V-21, 3V-24, 3V-32	1.84